



**New collection**

---

200 references  
4 technologies

**All in 1**

---

# **Creation 55**

The Reference in LVT

**Gerflor**<sup>®</sup>

---

# Creation 55

Exclusive by Gerflor

4 technologies  
5 products

## All in 1



### Creation 55 Solid Clic

- Duocore 2.0 : Nouvelle formulation rigidifiée
- Système clipsage exclusif - Rénovation sur support existant
- Confort acoustique et à la marche
- Duocore 2.0: New rigid core
- Exclusive Clic - Ideal for renovation
- Acoustic and walking comfort



Pensez aux sous couches acoustiques Gerflor  
Think about Gerflor acoustic underlayers

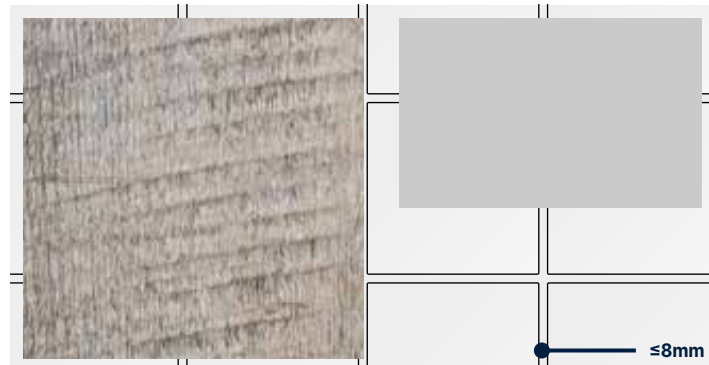


≤6mm  
CARRELAGE  
CERAMIC



### Creation 55 Rigid Acoustic

- Rénovation lourde sur support existant
- Sous couche acoustique intégrée
- Ideal for Heavy Renovation
- Integrated acoustic backing

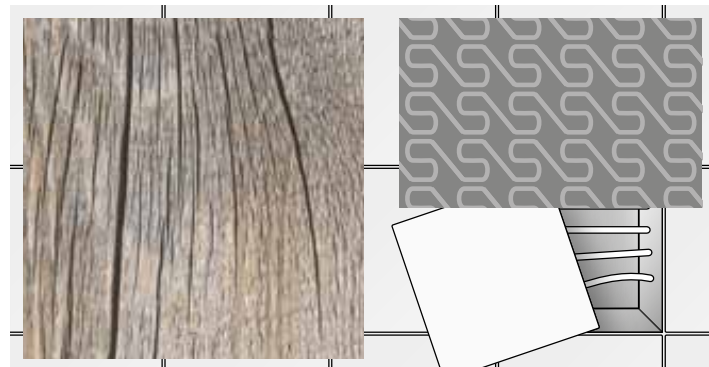


≤8mm  
CARRELAGE  
CERAMIC



### Creation 55 Loose Lay, Creation 55 Loose Lay Acoustic

- Installation amovible, idéal sur plancher technique
- Mixer les décors pour personnaliser vos espaces !
- Offre acoustique : 19dB
- Removable installation, ideal for raised access floors
- Mix & match Designs!
- For acoustic offer: 19dB



PLANCHER TECHNIQUE  
RAISED ACCESS FLOOR

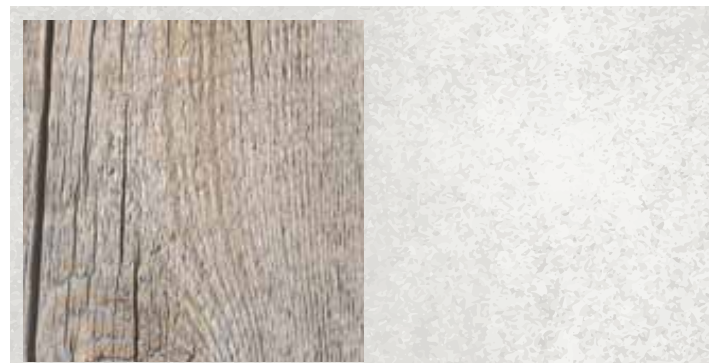


### Creation 55

- Pose sur support neuf ou préparé
- L'offre décors la plus large : Mix & Match
- Ideal for New build
- Largest choice of designs: Mix & Match



Pensez aux sous couches acoustiques Gerflor  
Think about Gerflor acoustic underlayers



SUPPORT PRÉPARÉ  
LEVELLED SURFACE

## New Creation 55 Collection

200 references  
60 designs

## All in 1



### Nouveaux designs

- 20 nouveaux décors exclusifs
- Grains synchronisés
- Format chevron
- Personnalisez votre Creation 55 avec MyCreation\*

### New designs

- 20 new exclusive designs
- Emboss in register
- Herringbone format
- Customize your Creation 55 with MyCreation\*

38  
CORE  
DESIGNS

### Core Designs

- 38 décors disponibles dans tous les systèmes de pose (DB, Solid Clic, Rigid AC)

### Core designs

- 38 designs available in all installation systems (DB, Solid Clic, Rigid AC)



### Nouveau traitement de surface

- Aspect Ultra Mat
- Résistance aux micro-rayures
- Facilité d'entretien

### New surface treatment

- Ultra Matt Finish
- Micro Scratch Resistance
- Ease of maintenance



CURTON STONE LIGHT BEIGE



### Nouvelle offre clipsable

New interlocking offer



### Offre complète

- Sous couches, tapis, plinthes et profilés coordonnés

### Complete solution

- Underlayers, matting, matching skirtings and coverstrips



### 100% en stock

100% in stock

\* Pour plus d'informations contactez votre commercial Gerflor. \* For more information please contact your sales representative.









**Fabricant Européen de LVT depuis 1985**  
European LVT manufacturer since 1985

- 4 sites de production LVT
- 4 LVT factories
- Stock en Europe  
12 plateformes logistiques
- Stock in Europe  
12 logistics hubs
- Direction artistique intégrée  
> décors exclusifs
- Internal Design Center  
> exclusive designs

# Gerflor The Reference!

FABRIK MIX JUTE

## Creation 55

Code	Color Design	Dry Back	Solid Clic	Rigid Acoustic	Looselay	Looselay Acoustic	Plinthe / Skirting Matching Design	Profilé / Coverstrip Matching Design	Grain / Emboss
									
0447	Amador	184 x 1219	212 x 1239	177 x 1219**	229 x 1220***	229 x 1220***	S004	S004	Saw Effect
0579	Amarante	184 x 1219	-	-	-	-	S005	S001	Brushed
0060	Arena	184 x 1219	212 x 1239	-	229 x 1220***	229 x 1220***	S026	S001	Saw Effect
0347	Ballerina	184 x 1219 152 x 762	212 x 1239	177 x 1219 125 x 750	229 x 1220	229 x 1220	S008	S008	Natural
0869	Bloom Uni Grey	610 x 610	389 x 729	457 x 914	600 x 600	-	S071	S071	Hammered
0868	Bloom Uni Taupe	610 x 610	389 x 729	457 x 914	600 x 600	-	S072	S072	Hammered
0871	Bostonian Oak	184 x 1219	212 x 1239	177 x 1219	229 x 1220	-	S016	S016	Natural
0853	Bostonian Oak Beige	184 x 1219	212 x 1239	177 x 1219	229 x 1220	-	S017	S017	Natural
0851	Bostonian Oak Honey	184 x 1219	212 x 1239	177 x 1219	-	-	S019	S019	Natural
0459	Brownie	184 x 1219	-	-	-	-	S073	S001	Natural
0457	Buffalo	184 x 1219	212 x 1239	-	-	-	S075	S001	Brushed
0465	Cambridge	184 x 1219	212 x 1239	-	-	-	S065	S001	Natural
0618	Carmel	457 x 914	389 x 729	457 x 914	500 x 500	500 x 500	S020	S020	Hammered
0850	Cedar Brown	230 x 1500	240 x 1461	225 x 1524	-	-	S024	S024	Natural
0849	Cedar Pure	230 x 1500	240 x 1461	225 x 1524	-	-	S025	S025	Natural
1278	Charming Oak Beige	184 x 1219	212 x 1239 *	177 x 1219	-	-	S160	S001	EIR - Charming Oak
1280	Charming Oak Brown	184 x 1219	212 x 1239 *	177 x 1219	-	-	S161	S001	EIR - Charming Oak
1279	Charming Oak Grey	184 x 1219	212 x 1239 *	177 x 1219	-	-	S162	S001	EIR - Charming Oak
1277	Charming Oak Nature	184 x 1219	212 x 1239 *	177 x 1219	-	-	S163	S001	EIR - Charming Oak
1276	Curton Stone Light Beige	457 x 914	389 x 729	457 x 914**	-	-	S184	S184	Stone
1275	Curton Stone Light Grey	457 x 914	389 x 729	457 x 914**	-	-	S185	S185	Stone
1269	Fabrik Mix Dark Grey	610 x 610	389 x 729	-	600 x 600	-	S165	S001	Hammered
1270	Fabrik Mix Indigo	610 x 610	-	-	600 x 600	-	S166	S001	Hammered
1268	Fabrik Mix Jute	610 x 610	389 x 729	-	-	-	S167	S001	Hammered
0441	Honey Oak	184 x 1219	212 x 1239	177 x 1219	229 x 1220	229 x 1220	S033	S033	Natural
0455	Long Board	184 x 1219	212 x 1239	177 x 1219	229 x 1220	229 x 1220	S034	S034	Brushed
1272	Lounge Oak Beige	230 x 1500	240 x 1461 *	225 x 1524	-	-	S168	S001	EIR - Lounge Oak
1274	Lounge Oak Chestnut	230 x 1500	240 x 1461 *	225 x 1524	-	-	S169	S001	EIR - Lounge Oak
1271	Lounge Oak Golden	230 x 1500	240 x 1461 *	225 x 1524	-	-	S170	S001	EIR - Lounge Oak
1273	Lounge Oak Natural	230 x 1500	240 x 1461 *	225 x 1524	-	-	S171	S001	EIR - Lounge Oak
0448	Malua Bay	184 x 1219	212 x 1239	177 x 1219	229 x 1220	229 x 1220	S035	S035	Brushed
0068	Mansfield Light	184 x 1219	-	-	-	-	S036	S001	Brushed
0069	Mansfield Natural	184 x 1219	-	-	-	-	S037	S001	Brushed
0461	Michigan	184 x 1219	212 x 1239	177 x 1219	-	-	S038	S038	Brushed
0061	Oxford	184 x 1219	212 x 1239	-	-	-	S043	S001	Brushed
0856	Paint Wood Taupe	184 x 1219	212 x 1239	-	-	-	S046	S001	Brushed
1282	Palissandro Beige	230 x 1500	240 x 1461	-	-	-	S176	S001	Stone
1281	Palissandro Grey	230 x 1500	240 x 1461	-	-	-	S177	S001	Stone
0374	Parker Station	610 x 610	389 x 729	457 x 914	500 x 500	500 x 500	S047	S047	Hammered
0503	Quartet	184 x 1219 152 x 762	212 x 1239	177 x 1219 125 x 750	-	-	S056	S056	Natural
0859	Quartet Fauve	184 x 1219	212 x 1239	177 x 1219	229 x 1220	-	S057	S057	Natural
0870	Quartet Honey	184 x 1219	212 x 1239	177 x 1219	229 x 1220	-	S058	S058	Natural
0456	Ranch	184 x 1219 230 x 1500	212 x 1239 240 x 1461	177 x 1219	229 x 1220	229 x 1220	S053	S053	Brushed
0436	Riverside	610 x 610	389 x 729	457 x 914	600 x 600	-	S032	S032	Hammered
0445	Rustic Oak	184 x 1219	212 x 1239	177 x 1219	-	-	S062	S062	Natural
1286	Salento Beige	184 x 1219	212 x 1239	177 x 1219	-	-	S186	S186	Natural
1287	Salento Light Grey	184 x 1219	212 x 1239	177 x 1219	-	-	S187	S187	Natural
0373	Silver City	610 x 610	-	-	-	-	S048	S001	Hammered
0858	Stripe Oak Ice	184 x 1219	212 x 1239	-	-	-	S009	S001	Natural
0848	Swiss Oak Beige	184 x 1219	212 x 1239	177 x 1219	-	-	S011	S011	Natural
0796	Swiss Oak Golden	184 x 1219	212 x 1239	177 x 1219	229 x 1220	229 x 1220	S015	S015	Natural
0846	Swiss Oak Pearl	184 x 1219	212 x 1239	177 x 1219	229 x 1220	229 x 1220	S014	S014	Natural
0504	Twist	184 x 1219	212 x 1239	177 x 1219	229 x 1220	229 x 1220	S039	S039	Natural
1285	Urban Street Beige	914 x 914	-	-	-	-	S178	S001	Hammered
1283	Urban Street Light	914 x 914	389 x 729	-	600 x 600	-	S179	S001	Hammered
1284	Urban Street Medium	914 x 914	389 x 729	-	600 x 600	-	S180	S001	Hammered
1288	White Lead Oak Blond	184 x 1219	-	-	-	-	S181	S001	EIR - White Lead Oak
1289	White Lead Oak Dark Beige	184 x 1219	-	-	-	-	S182	S001	EIR - White Lead Oak
1290	White Lead Oak Shadow Grey	184 x 1219	-	-	-	-	S183	S001	EIR - White Lead Oak
0584	White Lime	184 x 1219	212 x 1239	177 x 1219***	-	-	S074	S074	Saw Effect

\* Disponible en grain classique en 2022. Disponible en EIR en 2023 / Available with classic emboss in 2022. Available with EIR in 2023

\*\* Grain Hammered en Rigid Acoustic / Hammered emboss in Rigid Acoustic

\*\*\* Grain Brushed en Rigid Acoustic / Looselay / Looselay Acoustic / Brushed emboss in Rigid Acoustic / Looselay / Looselay Acoustic

S001 : Blanc / White

# Bien plus que du sol

## More than a floor

### Sous-couche / Underlayer

#### Creation Solid Clic

Gerflor Acoustic 15dB



Code: 1798  
Format: 1m x 15lm

Gerflor Acoustic Plus 19dB



Code: 0704  
Format: 0.98m x 15.3lm

Gerflor Silence Plus 19dB



Code: 5949  
Format: 1.18m x 8.5lm

#### Creation (Dry Back)

Gerflor Smart Fix 16dB



Code: 1698  
Format: 1m x 7.5lm

### Plinthe décor / Design skirting



Vinyl Code: 6086 + Color code / MDF Code: 5947 + Color code



**Plinthe blanche à peindre**  
White skirting can be painted over

Vinyl Code: 6086 S001      MDF Code: 5947S001

### Profilé multi-fonction décor / Design coverstrip



Aluminium code: 0647 + Color code - Format: 45mm x 0.90m  
Coloris disponibles sur [gerflor.fr](http://gerflor.fr) / Available colors on [gerflor.com](http://gerflor.com)

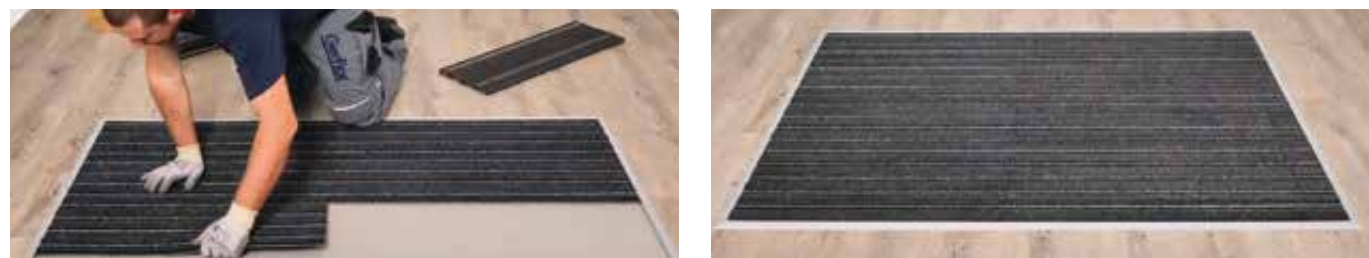
3 usages



- 1. Joint dilatation**  
Expansion gap
- 2. Rampe**  
Ramp
- 3. Seuil**  
Threshold

### Tapis d'entrée / Entrance mat

Lames pré-adhésivées (épaisseur 12mm) / Quickmat Tiles: Pre-adhesived planks (12mm thick)



Code: 1725, profiles 1726 and angles 1727 - Sol de 4 à 6mm d'épaisseur - adapted to 4 to 6mm thick products

# Nouveau traitement de surface

## New surface treatment



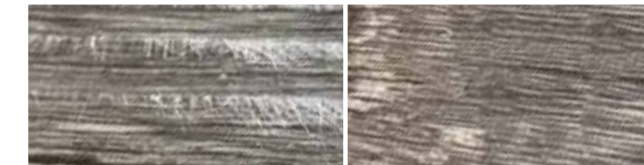
### Durabilité renforcée

#### Enhanced durability



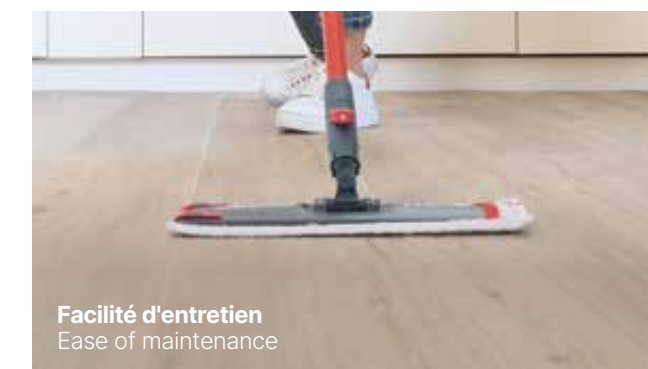
**Résistance aux micro-rayures**  
Micro scratch resistance

Vue microscopique (x5) - Microscopic view (x5)



**Vernis standard**  
Standard varnish

**Creation**



**Facilité d'entretien**  
Ease of maintenance

Encrassement après entretien - Fouling after cleaning



**Vernis standard**  
Standard varnish

**Creation**

### Aspect ultra mat

#### Ultra matt finish



Brillance (test 60°) - Gloss level (60° test)



**Vernis standard**  
Standard varnish

**Creation 2019 / Creation 2022**  
Même matité  
Unchanged visual aspect

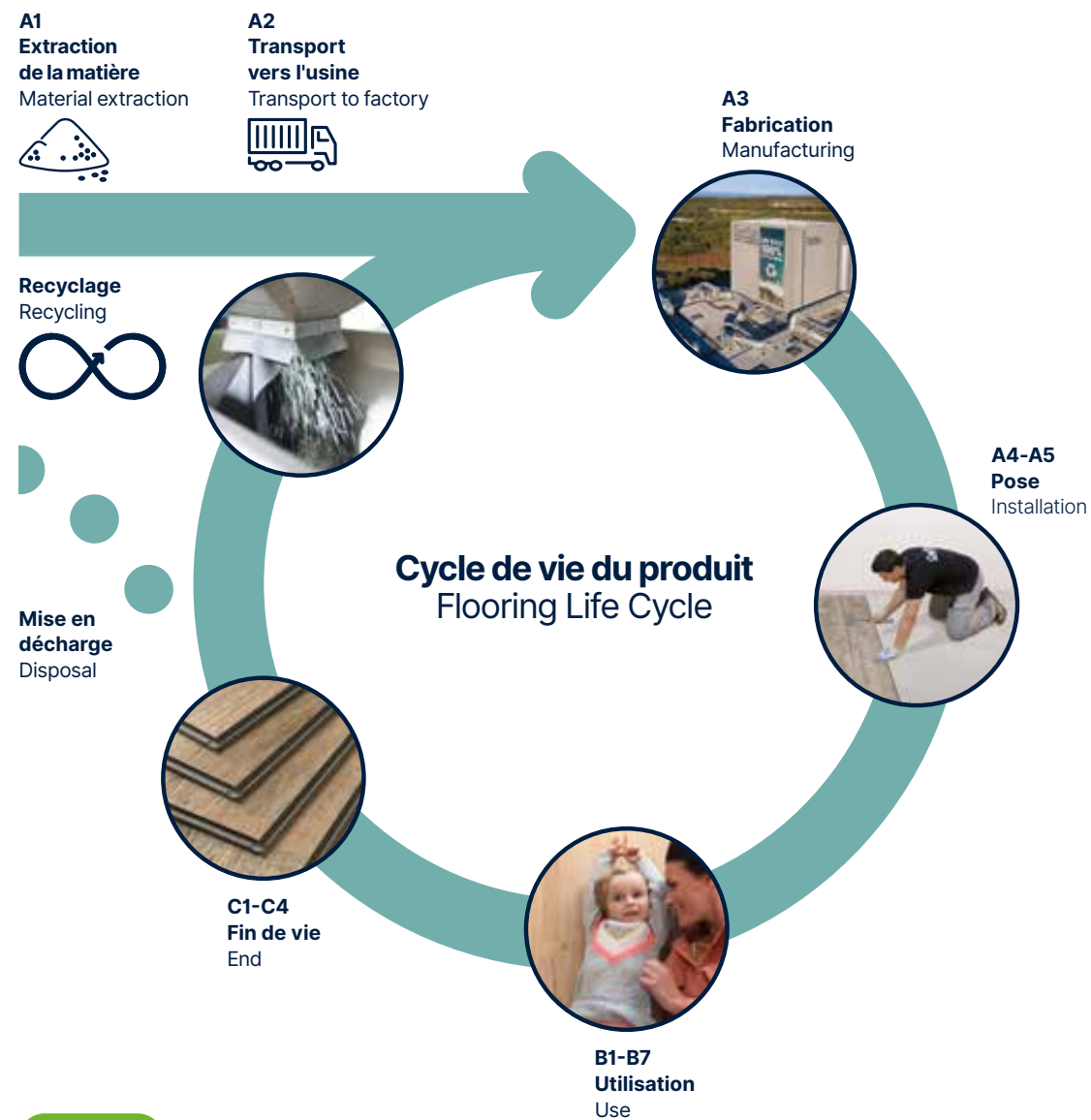
Protocoles d'entretien disponibles sur [gerflor.fr](http://gerflor.fr)  
Maintenance guidelines available on [gerflor.com](http://gerflor.com)

# Nos engagements pour un développement durable

## Our Commitments for a Sustainable future

### Toutes les gammes de produits Gerflor sont développées selon un modèle d'analyse de cycle de vie

All Gerflor product ranges are developed according to a life cycle analysis model



Les analyses de cycle de vie certifiées par un laboratoire indépendant sont disponibles dans les fiches de données environnementales et sanitaires (FDES)

Third-party verified life cycle analysis of our products can be found in their Environmental Product Declaration (EPD)

# Creation, la référence en développement durable

## Creation, the reference in sustainability



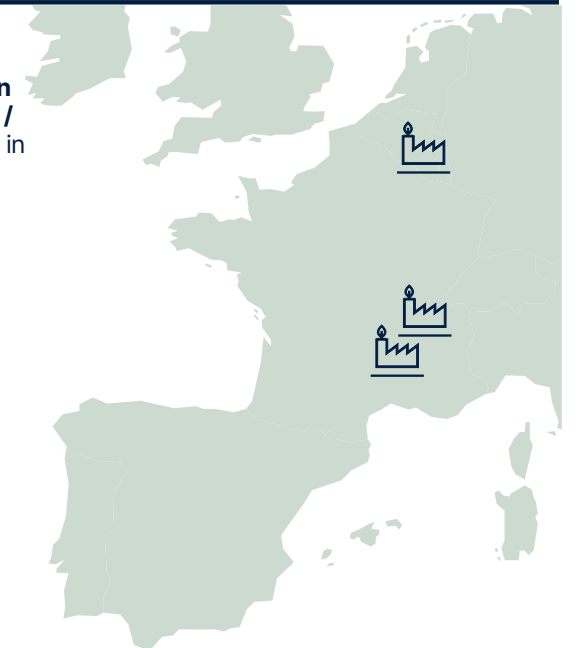
### Empreinte carbone

- Présence industrielle en Europe
- Certifications ISO14001 & 50001
- Énergie renouvelable

### Carbon footprint

- Manufacturing Footprint in Europe
- ISO14001 & 50001 certifications
- Renewable energy

3 sites de production en Europe / 3 factories in Europe



### Économie circulaire

- Produits 100% recyclables
- Jusqu'à 55% de contenu recyclé
- Solutions de pose sans colle
- Packaging carton 100% recyclé

### Circularity

- 100% recyclable products
- Up to 55% recycled content
- Adhesive Free solutions
- Packaging using 100% recycled cardboard



### Santé et sécurité

- 100% conforme Reach
- Sans phthalate\*
- Sans formaldéhyde
- Qualité de l'air intérieur : TVOC <10 µg/m³ après 28 jours (ISO 16000-6)

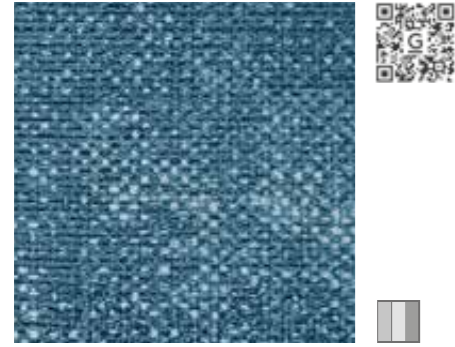
### Health and safety

- 100% Reach compliant
- Phthalate free\*
- Formaldehyde Free
- Indoor Air Quality: TVOC <10 µg/m³ after 28 days

\* Hors contenu recyclé  
\* Except recycled content



**we care / we act**



FABRIK MIX INDIGO 1270  
DB 610 x 610 | LL 600 x 600



SILVER CITY 0373  
DB 610 x 610



PARKER STATION 0374  
DB 610 x 610 | SOLID CLIC 389 x 729  
RIGID AC 457 x 914  
LL 500 x 500 | LL AC 500 x 500

### QR CODES

- Interior Designer
- Sample Order Echantillon

### Class 33 U3P3

**DB**  
Creation 55 (Dry Back)

**SOLID CLIC**  
Creation 55 Solid Clic

**RIGID AC**  
Creation 55 Rigid Acoustic

**LL**  
Creation 55 Looselay

**LL AC**  
Creation 55 Looselay Acoustic

### PACKAGING

Format (mm)	m <sup>2</sup> /box	m <sup>2</sup> /pallet
<b>Creation 55 Trend</b>		
184.15 x 1219.2	3.36	215.04
230 x 1500	3.11	214.59
152.4 x 762	3.82	213.92
457.2 x 914.4	3.76	218.08
609.6 x 609.6	3.35	187.60
<b>Creation 55 Design</b>		
184.15 x 1219.2	3.36	215.04
230 x 1500	3.11	214.59
914.4 x 914.4	4.18	192.28
<b>Creation 55 Solid Clic</b>		
212 x 1238.8	1.84	104.8
239.6 x 1460.8	2.1	100.8
388.8 x 728.7	1.7	102
<b>Creation 55 Rigid Acoustic</b>		
125 x 750	1.50	84
177 x 1219	1.73	96.88
225 x 1524	1.71	92.34
457 x 914	1.67	93.52
<b>Creation 55 Looselay</b>		
229 x 1220	2.23	124.88
500 x 500	2	128
600 x 600	2.16	95.04
<b>Creation 55 Looselay Acoustic</b>		
229 x 1220	2.23	124.88
500 x 500	2	128

Informations, LRV/NCS sur [gerflor.fr](http://gerflor.fr)  
More details, LRV/NCS on [gerflor.com](http://gerflor.com)



# Creation 55



STRIPE OAK ICE 0858  
DB 184 x 1219 | SOLID CLIC 212 x 1239



PALISSANDRO BEIGE 1282  
DB 230 x 1500 | SOLID CLIC 240 x 1461



PALISSANDRO BEIGE



URBAN STREET BEIGE



URBAN STREET BEIGE 1285  
DB 914 x 914



CURTON STONE LIGHT BEIGE 1276  
DB 457 x 914 | SOLID CLIC 389 x 729  
RIGID AC 457 x 914



PAINT WOOD TAUPE 0856  
DB 184 x 1219 | SOLID CLIC 212 x 1239



BLOOM UNI TAUPE 0868  
DB 610 x 610 | SOLID CLIC 389 x 729  
RIGID AC 457 x 914 | LL 600 x 600



FABRIK MIX JUTE 1268  
DB 610 x 610 | SOLID CLIC 389 x 729



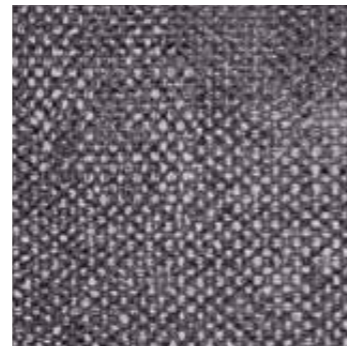
CURTON STONE LIGHT GREY 1275  
DB 457 x 914 | SOLID CLIC 389 x 729  
RIGID AC 457 x 914



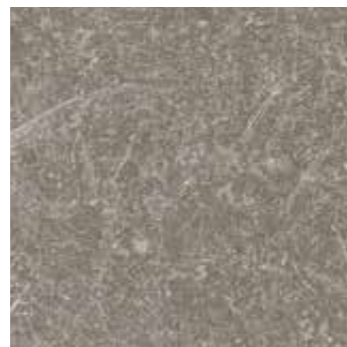
FABRIK MIX DARK GREY



RIVERSIDE 0436  
DB 610 x 610 | SOLID CLIC 389 x 729  
RIGID AC 457 x 914 | LL 600 x 600



FABRIK MIX DARK GREY 1269  
DB 610 x 610 | SOLID CLIC 389 x 729  
LL 600 x 600



CARMEL 0618  
DB 457 x 914 | SOLID CLIC 389 x 729  
RIGID AC 457 x 914 | LL 500 x 500  
LL AC 500 x 500



BLOOM UNI GREY 0869  
DB 610 x 610 | SOLID CLIC 389 x 729  
RIGID AC 457 x 914 | LL 600 x 600



URBAN STREET MEDIUM 1284  
DB 914 x 914 | SOLID CLIC 389 x 729  
LL 600 x 600



URBAN STREET LIGHT 1283  
DB 914 x 914 | SOLID CLIC 389 x 729  
LL 600 x 600

NIVEAU DE CONTRASTE DU DÉCOR / DESIGN SHADE VARIATION: Léger / Light Moyen / Medium Fort / High



CHARMING OAK BROWN 1280  
DB 184 x 1219 | **SOLID CLIC\*** 212 x 1239 | **RIGID AC** 177 x 1219



## QR CODES

- Interior Designer
- Sample Order  
Échantillon

### Class 33 U3P3

**DB**  
Creation 55 (Dry Back)

**SOLID CLIC**  
Creation 55 Solid Clic

**RIGID AC**  
Creation 55 Rigid Acoustic

**LL**  
Creation 55 Looselay

**LL AC**  
Creation 55 Looselay  
Acoustic

## PACKAGING

Format (mm)	m <sup>2</sup> /box	m <sup>2</sup> /pallet
<b>Creation 55 Trend</b>		
184.15 x 1219.2	3.36	215.04
230 x 1500	3.11	214.59
152.4 x 762	3.82	213.92
457.2 x 914.4	3.76	218.08
609.6 x 609.6	3.35	187.60
<b>Creation 55 Design</b>		
184.15 x 1219.2	3.36	215.04
230 x 1500	3.11	214.59
914.4 x 914.4	4.18	192.28
<b>Creation 55 Solid Clic</b>		
212 x 1238.8	1.84	104.8
239.6 x 1460.8	2.1	100.8
388.8 x 728.7	1.7	102
<b>Creation 55 Rigid Acoustic</b>		
125 x 750	1.50	84
177 x 1219	1.73	96.88
225 x 1524	1.71	92.34
457 x 914	1.67	93.52
<b>Creation 55 Looselay</b>		
229 x 1220	2.23	124.88
500 x 500	2	128
600 x 600	2.16	95.04
<b>Creation 55 Looselay Acoustic</b>		
229 x 1220	2.23	124.88
500 x 500	2	128

Informations, LRV/NCS sur [gerflor.fr](http://gerflor.fr)  
More details, LRV/NCS on [gerflor.com](http://gerflor.com)



LOUNGE OAK CHESTNUT 1274  
DB 230 x 1500 | **SOLID CLIC\*** 240 x 1461 | **RIGID AC** 225 x 1524



LOUNGE OAK GOLDEN 1271  
DB 230 x 1500 | **SOLID CLIC\*** 240 x 1461 | **RIGID AC** 225 x 1524



LOUNGE OAK NATURAL 1273  
DB 230 x 1500 | **SOLID CLIC\*** 240 x 1461 | **RIGID AC** 225 x 1524



LOUNGE OAK BEIGE 1272  
DB 230 x 1500 | **SOLID CLIC\*** 240 x 1461 | **RIGID AC** 225 x 1524



WHITE LEAD OAK DARK BEIGE 1289  
DB 184 x 1219



CHARMING OAK NATURE 1277  
DB 184 x 1219 | **SOLID CLIC\*** 212 x 1239 | **RIGID AC** 177 x 1219



WHITE LEAD OAK BLOND 1288  
DB 184 x 1219



CHARMING OAK BEIGE 1278  
DB 184 x 1219 | **SOLID CLIC\*** 212 x 1239 | **RIGID AC** 177 x 1219



WHITE LEAD OAK SHADOW GREY 1290  
DB 184 x 1219



CHARMING OAK GREY 1279  
DB 184 x 1219 | **SOLID CLIC\*** 212 x 1239 | **RIGID AC** 177 x 1219



# Creation 55



BROWNIE 0459  
DB 184 x 1219



BUFFALO 0457  
DB 184 x 1219 | SOLID CLIC 212 x 1239



## QR CODES

- Interior Designer
- Sample Order Échantillon

### Class 33 U3P3

**DB**  
Creation 55 (Dry Back)

**SOLID CLIC**  
Creation 55 Solid Clic

**RIGID AC**  
Creation 55 Rigid Acoustic

**LL**  
Creation 55 Looselay

**LL AC**  
Creation 55 Looselay Acoustic

## PACKAGING

Format (mm)	m <sup>2</sup> /box	m <sup>2</sup> /pallet
<b>Creation 55 Trend</b>		
184.15 x 1219.2	3.36	215.04
230 x 1500	3.11	214.59
152.4 x 762	3.82	213.92
457.2 x 914.4	3.76	218.08
609.6 x 609.6	3.35	187.60
<b>Creation 55 Design</b>		
184.15 x 1219.2	3.36	215.04
230 x 1500	3.11	214.59
914.4 x 914.4	4.18	192.28
<b>Creation 55 Solid Clic</b>		
212 x 1238.8	1.84	104.8
239.6 x 1460.8	2.1	100.8
388.8 x 728.7	1.7	102
<b>Creation 55 Rigid Acoustic</b>		
125 x 750	1.50	84
177 x 1219	1.73	96.88
225 x 1524	1.71	92.34
457 x 914	1.67	93.52
<b>Creation 55 Looselay</b>		
229 x 1220	2.23	124.88
500 x 500	2	128
600 x 600	2.16	95.04
<b>Creation 55 Looselay Acoustic</b>		
229 x 1220	2.23	124.88
500 x 500	2	128

Informations, LRV/NCS sur [gerflor.fr](http://gerflor.fr)  
More details, LRV/NCS on [gerflor.com](http://gerflor.com)



LONG BOARD 0455  
DB 184 x 1219 | SOLID CLIC 212 x 1239 | RIGID AC 177 x 1219  
LL 229 x 1220 | LL AC 229 x 1220



RUSTIC OAK 0445  
DB 184 x 1219 | SOLID CLIC 212 x 1239 | RIGID AC 177 x 1219



BOSTONIAN OAK 0871  
DB 184 x 1219 | SOLID CLIC 212 x 1239 | RIGID AC 177 x 1219  
LL 229 x 1220



AMARANTE 0579  
DB 184 x 1219



BALLERINA 0347  
DB 184 x 1219 | SOLID CLIC 212 x 1239 | RIGID AC 177 x 1219  
152 x 762 | 125 x 750  
LL 229 x 1220 | LL AC 229 x 1220



CAMBRIDGE 0465  
DB 184 x 1219 | SOLID CLIC 212 x 1239



MICHIGAN 0461  
DB 184 x 1219 | SOLID CLIC 212 x 1239 | RIGID AC 177 x 1219



CEDAR BROWN 0850  
DB 230 x 1500 | SOLID CLIC 240 x 1461 | RIGID AC 225 x 1524



QUARTET HONEY 0870  
DB 184 x 1219 | SOLID CLIC 212 x 1239 | RIGID AC 177 x 1219  
LL 229 x 1220



QUARTET FAUVE 0859  
DB 184 x 1219 | SOLID CLIC 212 x 1239 | RIGID AC 177 x 1219  
LL 229 x 1220



QUARTET 0503  
DB 184 x 1219 | SOLID CLIC 212 x 1239 | RIGID AC 177 x 1219  
152 x 762 | 125 x 750



BOSTONIAN OAK HONEY 0851  
DB 184 x 1219 | SOLID CLIC 212 x 1239 | RIGID AC 177 x 1219



HONEY OAK 0441  
DB 184 x 1219 | SOLID CLIC 212 x 1239 | RIGID AC 177 x 1219  
LL 229 x 1220 | LL AC 229 x 1220



SWISS OAK GOLDEN 0796  
DB 184 x 1219 | SOLID CLIC 212 x 1239 | RIGID AC 177 x 1219  
LL 229 x 1220 | LL AC 229 x 1220



NIVEAU DE CONTRASTE DU DÉCOR / DESIGN SHADE VARIATION: Léger / Light Moyen / Medium Fort / High



# Creation 55



MANSFIELD NATURAL 0069  
DB 184 x 1219



BOSTONIAN OAK BEIGE 0853  
DB 184 x 1219 | SOLID CLIC 212 x 1239 | RIGID AC 177 x 1219  
LL 229 x 1220



SWISS OAK BEIGE 0848  
DB 184 x 1219 | SOLID CLIC 212 x 1239 | RIGID AC 177 x 1219



MALUA BAY 0448  
DB 184 x 1219 | SOLID CLIC 212 x 1239 | RIGID AC 177 x 1219  
LL 229 x 1220 | LL AC 229 x 1220



TWIST 0504  
DB 184 x 1219 | SOLID CLIC 212 x 1239 | RIGID AC 177 x 1219  
LL 229 x 1220 | LL AC 229 x 1220



CEDAR PURE 0849  
DB 230 x 1500 | SOLID CLIC 240 x 1461 | RIGID AC 225 x 1524



SALENTO LIGHT GREY 1287  
DB 184 x 1219 | SOLID CLIC 212 x 1239 | RIGID AC 177 x 1219



SALENTO BEIGE 1286  
DB 184 x 1219 | SOLID CLIC 212 x 1239 | RIGID AC 177 x 1219

## QR CODES

- Interior Designer
- Sample Order Echantillon

### Class 33 U3P3

**DB**  
Creation 55 (Dry Back)

**SOLID CLIC**  
Creation 55 Solid Clic

**RIGID AC**  
Creation 55 Rigid Acoustic

**LL**  
Creation 55 Looselay

**LL AC**  
Creation 55 Looselay Acoustic

## PACKAGING

Format (mm)	m <sup>2</sup> /box	m <sup>2</sup> /pallet
<b>Creation 55 Trend</b>		
184.15 x 1219.2	3.36	215.04
230 x 1500	3.11	214.59
152.4 x 762	3.82	213.92
457.2 x 914.4	3.76	218.08
609.6 x 609.6	3.35	187.60
<b>Creation 55 Design</b>		
184.15 x 1219.2	3.36	215.04
230 x 1500	3.11	214.59
914.4 x 914.4	4.18	192.28
<b>Creation 55 Solid Clic</b>		
212 x 1238.8	1.84	104.8
239.6 x 1460.8	2.1	100.8
388.8 x 728.7	1.7	102
<b>Creation 55 Rigid Acoustic</b>		
125 x 750	1.50	84
177 x 1219	1.73	96.88
225 x 1524	1.71	92.34
457 x 914	1.67	93.52
<b>Creation 55 Looselay</b>		
229 x 1220	2.23	124.88
500 x 500	2	128
600 x 600	2.16	95.04
<b>Creation 55 Looselay Acoustic</b>		
229 x 1220	2.23	124.88
500 x 500	2	128

Informations, LRV/NCS sur [gerflor.fr](http://gerflor.fr)  
More details, LRV/NCS on [gerflor.com](http://gerflor.com)

Protecshield™



SWISS OAK PEARL 0846  
DB 184 x 1219 | SOLID CLIC 212 x 1239 | RIGID AC 177 x 1219  
LL 229 x 1220 | LL AC 229 x 1220



OXFORD 0061  
DB 184 x 1219 | SOLID CLIC 212 x 1239



PALISSANDRO GREY 1281  
DB 230 x 1500 | SOLID CLIC 240 x 1461



AMADOR 0447  
DB 184 x 1219 | SOLID CLIC 212 x 1239 | RIGID AC 177 x 1219  
LL 229 x 1220 | LL AC 229 x 1220



WHITE LIME 0584  
DB 184 x 1219 | SOLID CLIC 212 x 1239 | RIGID AC 177 x 1219



MANSFIELD LIGHT 0068  
DB 184 x 1219



ARENA 0060  
DB 184 x 1219 | SOLID CLIC 212 x 1239  
LL 229 x 1220 | LL AC 229 x 1220



RANCH 0456  
DB 184 x 1219 | SOLID CLIC 212 x 1239 | RIGID AC 177 x 1219  
LL 229 x 1220 | LL AC 229 x 1220

NIVEAU DE CONTRASTE DU DÉCOR / DESIGN SHADE VARIATION: Léger / Light Moyen / Medium Fort / High

Reproduction coloris non contractuelle / Non contractual imagery

# Creation 55

gerflor.com / follow us   



Z0014009



\* information sur le niveau d'émission de substances volatiles dans l'air intérieur, présentant un risque de toxicité par inhalation, sur une échelle de classe allant de A+ (très faibles émissions) à C (fortes émissions).

	Creation 55		Creation 55 Solid Clic	Creation 55 Rigid Acoustic	Creation 55 Looselay	Creation 55 Looselay Acoustic
	Creation 55	Creation 55 Trend	Creation 55 Design			

## DESCRIPTION / BESCHREIBUNG / BESCHRIJVING / DESCRIPCIÓN / DESCRIZIONE

<b>Total Thickness / Épaisseur totale / Gesamtdicke / Totale dikte / Espesor total / Espessura total / Spessore totale</b>	<b>EN ISO 24346</b>	<b>mm</b>	<b>2.50</b>	5.00	6.00	4.50	5.50	
	ASTM F386-02	inch	0.10	0.20	0.24	0.18	0.20	
<b>Thickness of the wearlayer / Épaisseur couche d'usure / Dicke der Nuttschicht / Dikte van de slijtlaag / Espesor capa de uso / Espessura camada de desgaste / Spessore strato di usura</b>	<b>EN ISO 24340</b>	<b>mm</b>	<b>0.55</b>	0.55	0.55	0.55	0.55	
	ASTM F410-02	inch	0.022	0.022	0.022	0.022	0.022	
<b>Weight / Poids / Flächengewicht / Gewicht / Peso / Peso / Peso</b>	<b>EN ISO 23997</b>	<b>g/m²</b>	<b>3 850</b>	<b>4 410</b>	7781	9 480	7 500	7 600
<b>Size / Format / Afmetingen / Dimensiones / Dimensões / Dimensione</b>	<b>ISO 24342</b>	<b>mm</b>	<b>457.2 x 914.4 mm / 18" x 36" / 9 / 3,76m²</b>					
<b>Number of planks or tiles per box / Sqm per box - Nombre de lames ou dalles par boîte / m² par boîte - Planken-/Fliesenanzahl pro Karton / m² pro Karton - Aantal tegels/planken per verpakking/aantal m2 per verpakking - Numero doghe/piastre e m² per scatola - Cantidad de losetas / Caja / Quantidade dosmosaicos / Caixa / m²</b>	<b>ASTM F 536</b>	<b>inch</b>	<b>609.6 x 609.6 mm / 24" x 24" / 9 / 3,35m²</b>	212 x 1238.8 / 8.3" x 48.8" / 7 / 1.84m² 239.6 x 1460.8 / 9.4" x 57.5" / 6 / 2.10m² 388.8 x 728.7 / 15.3" x 28.7" / 6 / 1.70m²	125 x 750 / 5" x 30" / 16 / 1.50m² 177 x 1219 / 7" x 48" / 8 / 1.73m² 225 x 1524 / 8.86" x 60" / 5 / 1.71m²	229 x 1220 / 9" x 48" / 8 / 2.23m² 500 x 500 / 19.7" x 19.7" / 8 / 2.0m² 600 x 600 / 23.62" x 23.62" / 6 / 2.16m²	229 x 1220 / 9" x 48" / 8 / 2.23m² 500 x 500 / 19.7" x 19.7" / 8 / 2.0m²	
		<b>Number of planks / m²</b>	914.4 x 914.4 mm / 36" x 36" / 5 / 4,18m² 152 x 762 mm / 6" x 30" / 33 / 3,82m² 230.0 x 1500.0 mm / 9" x 59" / 9 / 3,11m²					

## CLASSIFICATION / CLASSIFICATION / KLASSIFIKATION / CLASSIFICATIE / CLASIFICACIONES / CLASSIFICAÇÕES / CLASSIFICAZIONI

<b>Norm/Product Specification / Produktnorm / Norme / Spécification produit / Technische eigenschappen / Normas / Normas / Norma prodotto</b>	-	-	<b>EN ISO 10582</b>	EN ISO 10582	EN ISO 10582	EN ISO 10582	EN 651
	ASTM F 1700-04	-	Class III Type B	Class III Type B	Class III Type B	Class III Type B	Class III Type B
<b>European Classification / Classement européen / Europäische Klassifizierung / Europese classificatie / Clasificación europea / Classificação Europeia / Europea</b>	<b>EN ISO 10874</b>	<b>class</b>	<b>33 - 42</b>	33 - 42	33 - 42	33 - 42	33 - 42
<b>Classement UPEC</b>	-	-	<b>U3P3E2C2</b>	Pour pose dans les locaux classés U3P3 E1/2C2	-	U3P3E2C2	Pour pose dans les locaux classés U3P3 E1/2C2
<b>Certification UPEC (evaluation.ctsb.fr)</b>	<b>QB 30</b>	<b>n°</b>	<b>21.4023</b>	<b>355.002.1</b>	<b>783/356-004.1</b>	-	-
<b>Avis technique</b>	-	n° AT	-	-	Dossier en cours	-	-
<b>Appréciation Technique Experimentale</b>	-	n° Atex	-	-	-	-	2769_V1
<b>Fire Rating / Classement Feu / Brandverhalten / Brand classificatie / Fuego / Fojo / Reazione al fuoco</b>	EN 13501-1	class	Bfl-s1	Bfl-s1	Bfl-s1	Bfl-s1	Bfl-s1
<b>Static Electrical Propensity / Potentiel de charge / Begehaufladung / Elektrische eigenschappen / Comportamiento electrostático / Comportamento electrostático / Resistenza elettrica</b>	EN 1815	kV	< 2	< 2	< 2	< 2	< 2
<b>Slip Resistance Wet / Glissance humide / Rutschhemmung / Anti-slip / Deslizamiento húmedo / Escorregamento húmido / Scivolosità umida<sup>(1)</sup></b>	DIN 51130 / BGR 181	class	R10	R10	R10	R10	R10

## PERFORMANCES / TECHNISCHE EIGENSCHAFEN / TESTRESULTAAT / PERFORMANCE / CUALIDADES TÉCNICAS / CARATTERISTICHE TECNICHE

<b>Wear Resistance / Résistance à l'usure / Verschleißverhalten / Slijtvastheid / Abrasion / Abrasão / Resistenza all'abrasione</b>	EN 660.2	mm³	< 2.0	< 2.0	< 2.0	< 2.0	< 2.0
<b>Wear Group / Groupe d'abrasion / Verschleißgruppe / Groep slijtvastheid / Grupo de abrasión / Grupo de abrasão / Gruppo di abrasione</b>	<b>QB 30</b>	<b>group</b>	<b>T</b>	T	T	T	T
<b>Type Binder content / Teneur en agent liant / Bindemittelgehalt / Contenido en ligante / Conteúdo em ligante en agent</b>	ISO 10582	group	I	I	I	I	I
<b>Dimensional stability (norm) / Stabilité dimensionnelle (norme) / Maßstabilität (norm) / Maatvastheid (norm) / Estabilidad Dimensional (Exigencia) / Estabilidade dimensional (normalização) / Stabilità dimensionale (requisito normativo)</b>	<b>EN ISO 23999</b>	<b>%</b>	<b>≤ 0.25</b>	≤ 0.15	≤ 0.15	≤ 0.15	≤ 0.15
<b>Dimensional stability (average measured value) / Stabilité dimensionnelle (valeur moyenne mesurée) / Maßstabilität (Durchschnittswert) / Maatvastheid (gemeten gemiddelde waarde) / Estabilidad Dimensional (Valor medido) / Estabilidade Dimensional (Valor medio) / Stabilità dimensionale (rilevata)</b>	-	%	≤ 0.10	~ 0.05	≤ 0.10	~ 0.05	~ 0.05
<b>Residual Indentation / Poinçonnement statique rémanent / Resteindruck / Indrukbelasting / Punzonamiento / Puncoamento / Impronta</b>	<b>EN ISO 24343-1</b>	<b>mm</b>	<b>≤ 0.10</b>	≤ 0.10	≤ 0.05	≤ 0.05	≤ 0.20
<b>Impact sound insulation / Isolation acoustique bruits de chocs / Trittschallverbesserungsmaß / Geluidisolatie / Acústica / Isolamento acústico</b>	EN ISO 717-2	dB	4	4	19	7	19
<b>Room Impact / Sonorité à la marche / Raumschall / Loopgeluid / Rumore al calpestio / Sonoridad en la pisada / Sonoridade ao andar</b>	NFS 31074	dB	77	79	81	73	70
<b>Castor chair test / Essai de la chaise à roulettes / Stuhrollenbeanspruchung / Rolweerstand bureaustoelen / Determinación del efecto de una silla con ruedas / Resistência a cadeiras de rodas / Resistenza al passaggio di sed</b>	<b>ISO 4918</b>	-	<b>OK</b>	OK	OK	OK	OK
<b>Thermal Conductivity / Conductivité thermique / Wärmeleitfähigkeit / Thermische weerstand / Conductividad térmica / Contutividade térmica / Resistenza termica / Värmeledningsmotstånd / Varmemotstånd</b>	EN ISO 10456	W/(m.K)	0.25	0.25	0.25	0.25	0.25
<b>Colour Fastness / Solidité lumière / Lichtechtheit / Lichtechtheid / Resistencia a la luz / Estabilidade das cores / Solidità alla luce</b>	<b>EN ISO 105 - B02</b>	<b>Degree</b>	<b>≥ 6</b>	≥ 6	≥ 6	≥ 6	≥ 6
<b>Surface Treatment / Traitement de surface / Oberflächenvergütung / Oppervlaktebehandling / Tratamiento de superficie / Tratamento de superficie</b>	-	-	ProtecShield™	ProtecShield™	ProtecShield™	ProtecShield™	ProtecShield™
<b>Chemical Products Resistance / Résistance aux produits chimiques / Verhalten gegenüber Chemikalien (2) / Chemische bestendigheid / Resistencia a los productos químicos / Resistência aos produtos químicos / Resistenza ai prodotti chimici</b>	EN ISO 26987	-	OK	OK	OK	OK	OK

## ENVIRONMENT/INDOOR AIR QUALITY / QUALITE DE L'AIR INTERIEUR / UMWELT/RAUMLUFTQUALITÄT / AMBIENTE/QUALIDADE DO AR INTERIORENVIRONNEMENT/ MEDIO AMBIENTE/CALIDAD INTERIOR DEL AIRE INTERIOR / MEIOAMBIENTE/QUALIDADE DO AR INTERIOR

<b>TVOC after 28 days / TVOC après 28 jours / TVOC (28 Tage) / TVOC (28 dagen) / TVOC (28 dias) / TVOC (28 días) / TVOC (28 giorni) / TVOC (28 dagar) / TVOC (28 dager)</b>	ISO 16000-6	µ/m³	< 10	≤ 10	< 10	< 10	< 10
<b>Certification / Zeugnis / Certificado / Certificação</b>	-	-	Floorscore®	Floorscore®	Floorscore®	Floorscore®	Floorscore®

<b>CE MARKING / MARQUAGE CE / CE KENNZEICHNUNG / EG_CONFORMITEITSMERK / MARCA DE CONFORMIDAD CE / MARCA DE CONFORMIDADE CE / MARCATURA CE DI CONFORMITA</b>		EN 14041	-				
---	--	----------	---	---	---	---	---

(1) Ramp test with oil / Plan incliné avec huile / Schiefe Ebene  
(2) Beständig gegenüber nicht färbenden alkoholhaltigen Handdesinfektionsmitteln, Haushaltschemikalien und verdünnten Säuren und Laugen bei kurzzeitiger Einwirkung.

**IMPORTANT:** The information contained in this document is valid from 01/05/2022 and is subject to change at any time without notice. In the context of constantly changing technology, our customers are responsible, prior to any use, for checking with us that this document is the version in force.

**we care / we act** Our Commitments for a Sustainable future



**CARBON FOOTPRINT\***  
-20 % kg CO<sub>2</sub> equivalent/m<sup>2</sup> between 2020 and 2025



**BIO-SOURCED CONTENT\*\***  
10 % by 2025



**RECYCLED CONTENT**  
30 % by 2025



**ADHESIVE FREE\*\*\***  
35 % by 2025



**ANNUAL VOLUME RECYCLED**  
60 000 t by 2025



\* Scopes 1 and 2 defined in the GHG protocol \*\* % of activity with biosourced materials \*\*\* % of activity - adhesive free solution